



**San Francisco Fire Department Truck and Engine Maneuvers
On Potrero Avenue Around General Hospital**



Petersen Ave

Petersen Ave

Petersen Ave

Petersen Ave

1999

Campus Center





22nd Street

BIG BUGS
2006

GREEN LIGHT

SPEED LIMIT 25

SAN FRANCISCO FIRE DEPT. T7

SAN FRANCISCO T7 AERIAL TRUCK CO. KEEP BACK 300 FEET

6NR369



SAN FRANCISCO FIRE DEPT.

T7

SAN FRANCISCO
TRUCK CO.

2nd Street

BIG

BIG
BOOKS

2005



BIG
BUGS

The San Francisco
ZOO

21st Street

HOSPITAL



2151 ST

SPEED
LIMIT
25

BIG

The San Francisco
ZOO



SAN FRANCISCO FIRE DEPT.

T7

BIG
ZOO

BIG
ZOO



SG
MS
Sept 22 - Nov 12
SAN FRANCISCO
ZOO

SAN FRANCISCO
AERIAL TRUCK CO.

SAN FRANCISCO FIRE DEPT
77

BL
BL



S.F.D.

T7

SPEED
LIMIT
25



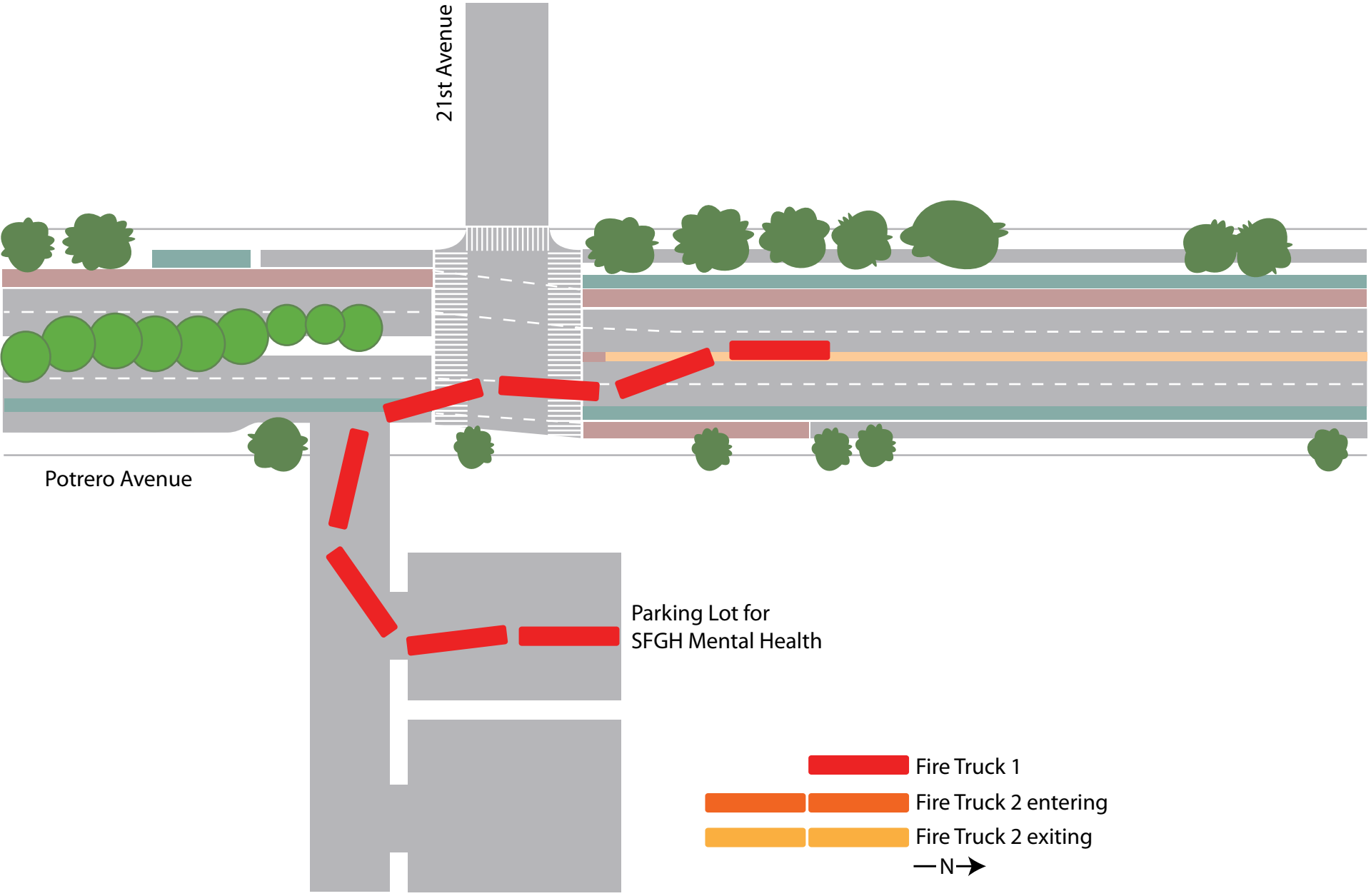


T7

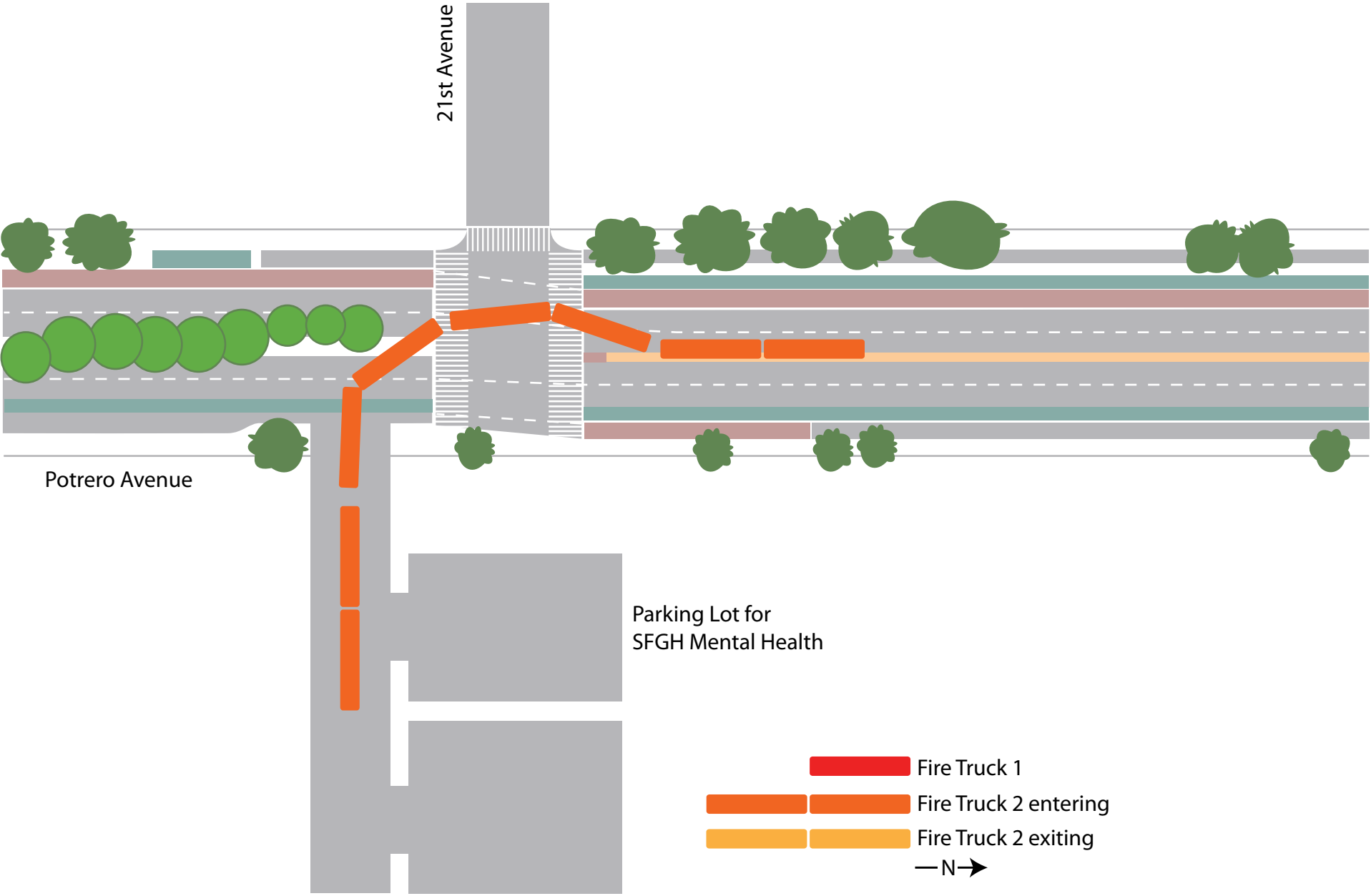
SAN FRANCISCO FIRE DE



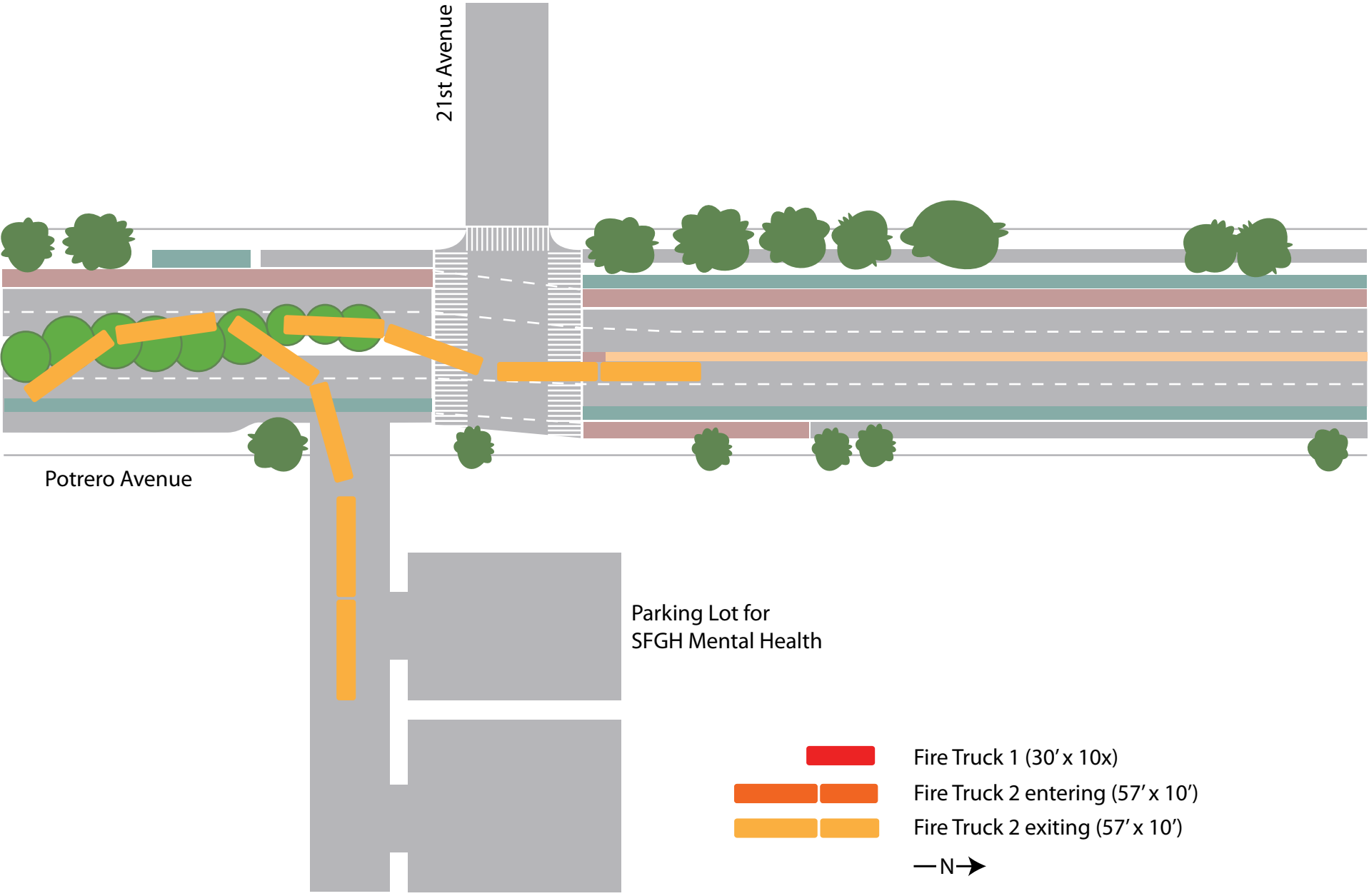
Fire Trucks Maneuvering on Potrero Avenue - Fire Truck 1 Entering Lot

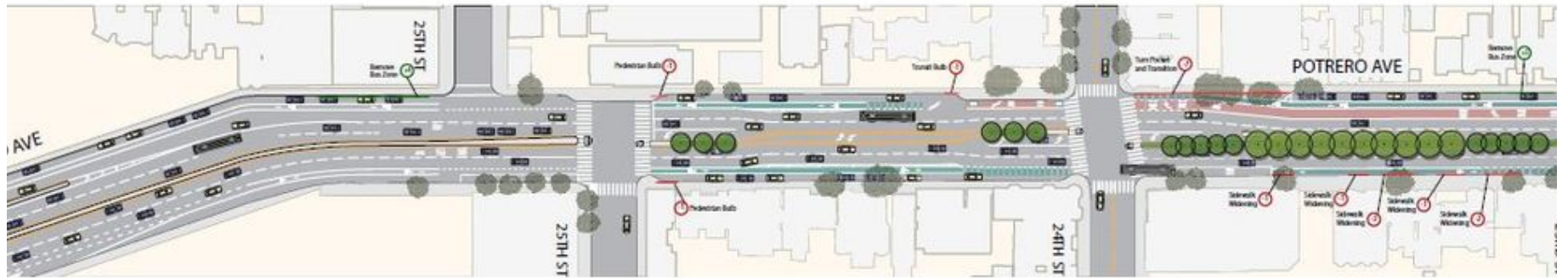


Fire Trucks Maneuvering on Potrero Avenue - Fire Truck 2 Entering Lot



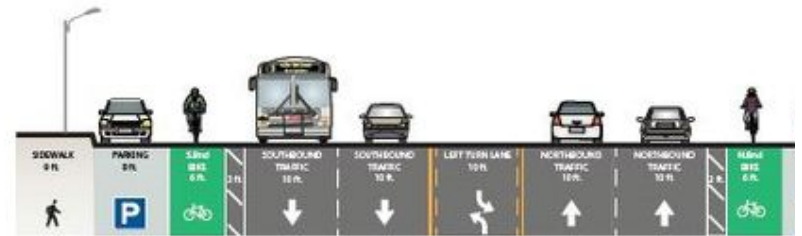
Fire Trucks Maneuvering on Potrero Avenue - Fire Truck 2 Exiting Lot



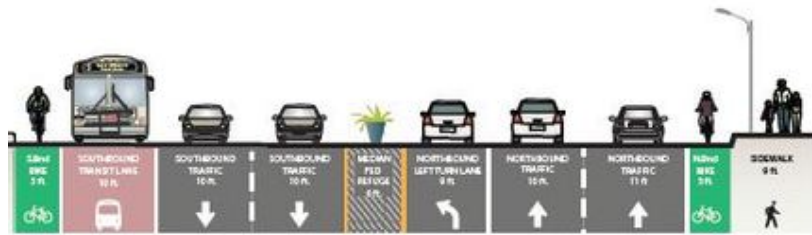




POTRERO AVENUE FACING NORTH
23RD AND 24TH TO 25TH, INTERSECTION



POTRERO AVENUE FACING NORTH
17TH TO 18TH AND 24TH TO 25TH, MIDBLOCK



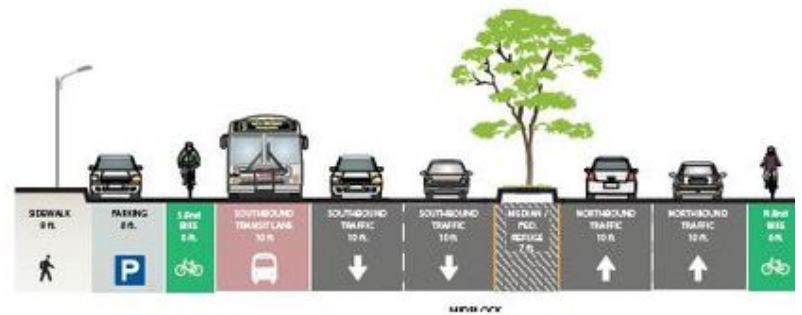
POTRERO AVENUE FACING NORTH
22ND, INTERSECTION



POTRERO AVENUE FACING NORTH
18TH TO 22ND, MIDBLOCK



POTRERO AVENUE FACING NORTH
24TH, INTERSECTION



POTRERO AVENUE FACING NORTH
22ND TO 24TH, MIDBLOCK

5.01 Street Widths for Emergency Access

Reference: 2010 S.F.F.C. Sections 503 and Appendix D, Section D105

The Division of Planning and Research of the San Francisco Fire Department has established requirements for minimum street widths to facilitate emergency equipment access. These requirements are specified as follows:

Minimum Street Widths and Access Roads

1. The San Francisco Fire Code (503.2.1) requires a minimum of 20 feet of unobstructed roadway and a vertical clearance of not less than 13' 6" for existing roadways. While a 20 foot wide roadway is permissible, past practice has shown that making ninety degree turns are not possible without the trucks moving into oncoming traffic. The vehicles can make the turn only on one way streets.
2. The San Francisco Fire Code (503.2.5) requires a turnaround for all dead-end fire access roads in excess of 150'. The San Francisco Fire Department has determined an 80 foot turnaround and a 40' radius to be sufficient.
3. The San Francisco Fire Code requires a minimum 26' wide street for new developments where the new buildings are greater than 30' in height from the lowest level of fire department vehicle access and are unsprinklered. These streets shall be located a minimum of 15' and a maximum of 30' from the buildings and shall be parallel to one entire side of the buildings.

SAN FRANCISCO FIRE DEPARTMENT VEHICLE SPECIFICATIONS

| | ENGINES | TRUCKS |
|-------------------------------------|--------------|--------------|
| Outside tire extremity | 8 ft. 2 in. | 8 ft. 3 in. |
| Vehicle width (with mirrors) | 10 ft. 4 in. | 10 ft 1 in. |
| Truck width with one jack extended | n/a | 12 ft. 9 in. |
| Truck width with two jacks extended | n/a | 17 ft. 9 in. |
| Vehicle height | 11 ft. | 12 ft. |
| Length of vehicle | 30 ft. | 57 ft. |
| Gross vehicle weight | 40,400 lbs. | 70,000 lbs. |
| Street grades maximum | 26% maximum | 26% maximum |
| Approach and departure | 15% maximum | 15% maximum |
| Truck aerial operations | n/a | 14% maximum |

The Fire Department will determine, on a case-by-case review, where the truck aerial operations may not be required.